

RJ45 CAT6 1U 48-PORT LOADED PATCH PANEL (110 TYPE)

SKUS C6-1U48

FEATURES

- 1U 48-Port Loaded RJ45 Category 6 Patch Panel 19", with T568A/B colour coded wiring patterns
- Use the Krone punch-down tool with provided keystone and IDC cap for terminating shielded 22-26 AWG Cat6A shielded cable
- Rack-mountable, fits within any standard 19" rack or cabinet
- Gold-plated contacts for a superior transmission, high reliability and durability
- Meets ANSI/TIA/EIA 568 B.2-1, ISO/IEC 11801 standards, RoHS compliant
- Mounting hardware not included with patch panel

MATERIALS

(1) FRONT PANEL	SECC, 1.5 mm thickness
(2) MIDDLE PANEL	SECC, 1.0 mm thickness
(3) RJ45 JACK	Housing: PBT+Glass Fiber, UL94V-0 Contact Bracket: PBT+Glass Fiber, UL94V-0
(4) RJ45 JACK CONTACT	Material: Phosphor Bronze with Nickel plated Finish: 50 micro-inch Gold plated
(5) IDC	Housing: PC+Glass Fiber, UL94V-2 Terminal: Phosphor Bronze with Tin plated
PCB	FR-4, UL94V-0
IDC DESCRIPTION	For 22-26 AWG For 110 or Krone punch-down tool

SPECIFICATIONS

UL APPROVED ROHS COMPLIANT	
MEETS C6 EIA/TIA 568B.2-1 STANDARD	
JACK INSERTION CYCLE	Over 750 Cycles (min.)
OPERATION TEMPERATURE	-10 — +60 Degrees Celsius
TOLERANCE	.X ± 1 .XX ± 0.05 .XXX ± 0.005
INSERTION FORCE	20N (max.)
RETENTION STRENGTH	7.7kg between Jack and Plug

© PC Cable World. All rights reserved.

PC Cable World product specifications are subject to change without notice, but are accurate at the time of printing. Please contact a sales representative for current specs. Please note that all physical specifications are nominal.

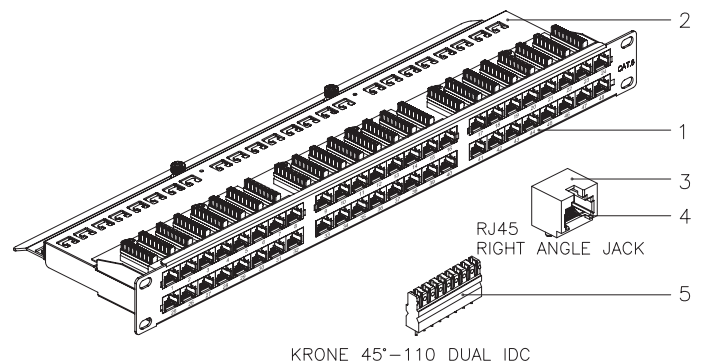
www.pccableworld.com



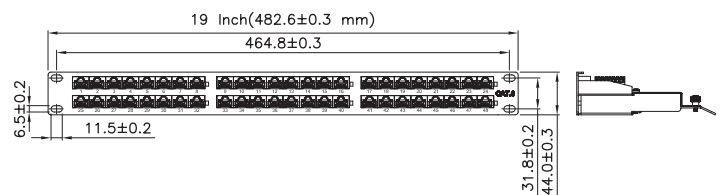
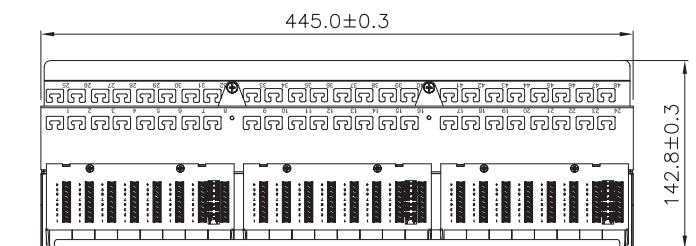
AVAILABLE COLOURS



SIZE (WxDxH) 482 x 143 x 44 mm



KRONE 45°-110 DUAL IDC



RJ45 CAT6 12-PORT LOADED PATCH PANEL (110 TYPE)

SKUS C6-4512

FEATURES

- 1U 12-Port Loaded RJ45 Category 6 Patch Panel, with T568A/B colour coded wiring patterns
- Rack-mountable, fits within any standard 19" rack or cabinet
- Use with 110 punch-down tool with keystones for terminating 22-26 AWG Cat6 cable
- Labels on the front provide space for adding identification, with an additional port numbering system on the front and rear of the patch panel
- Meets ANSI/EIA/TIA 568B AND ISO/IEC 11801 & EN50173 standards, RoHS compliant, Third Party Tested, and cETLus Intertek Listed
- Mounting hardware not included with patch panel

MATERIALS

FRONT PLATE	Fireproof ABS UL-94V0
PANEL	Metal (SPCC)
JACK	8P8C 50 Micro-inches gold plated
PCB	FR-4 / UL-94V0
IDC CAP	Fireproof ABS UL-94V0
IDC BODY	Fireproof ABS UL-94V0
IDC PIN	Bronze & Tinned
IDC DESCRIPTION	For 22-26 AWG For 110 punch-down tool

SPECIFICATIONS

UL APPROVED 3P THIRD PARTY TESTED ROHS COMPLIANT	INSULATION RESISTANCE	500M ohms (min.)	
MEETS C6 EIA/TIA 568B STANDARD CETLUS CERTIFIED	CONTACT RESISTANCE	20m ohms (max.)	
IDC PUNCH DOWN CYCLE	Over 250 Cycles (min.)	CURRENT RATING	1.5 Amps
JACK INSERTION CYCLE	Over 2000 Cycles (min.)	DC RESISTANCE	0.1 ohms (max.)
OPERATION TEMPERATURE	-40 — +70 Degrees Celsius	WITHSTANDING VOLTAGE	1000 VAC RMS @ 60Hz/1min
TOLERANCE	X ± 1 .X ± 0.2 .XX ± 0.15		

© PC Cable World. All rights reserved.

PC Cable World product specifications are subject to change without notice, but are accurate at the time of printing. Please contact a sales representative for current specs. Please note that all physical specifications are nominal.

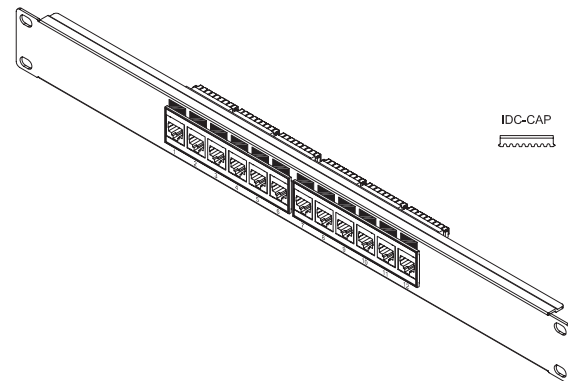
www.pccableworld.com



AVAILABLE COLOURS



SIZE (WxDxH) 482 x 30 x 44 mm



RJ45 CAT6 24-PORT LOADED PATCH PANEL (110 TYPE)

SKUS C6-4524

FEATURES

- 1U 24-Port Loaded RJ45 Category 6 Patch Panel, with T568A/B colour coded wiring patterns
- Rack-mountable, fits within any standard 19" rack or cabinet
- Use with 110 punch-down tool with keystones for terminating 22-26 AWG Cat6 cable
- Labels on the front provide space for adding identification, with an additional port numbering system on the front and rear of the patch panel
- Meets ANSI/EIA/TIA 568B AND ISO/IEC 11801 & EN50173 standards, RoHS compliant, Third Party Tested, and cETLus Intertek Listed
- Mounting hardware not included with patch panel

MATERIALS

FRONT PLATE	Fireproof ABS UL-94V0
PANEL	Metal (SPCC)
JACK	8P8C 50 Micro-inches gold plated
PCB	FR-4 / UL-94V0
IDC CAP	Fireproof ABS UL-94V0
IDC BODY	Fireproof ABS UL-94V0
IDC PIN	Bronze & Tinned
IDC DESCRIPTION	For 22-26 AWG For 110 punch-down tool

SPECIFICATIONS

UL APPROVED 3P THIRD PARTY TESTED ROHS COMPLIANT	INSULATION RESISTANCE	500M ohms (min.)	
MEETS C6 EIA/TIA 568B STANDARD CETLUS CERTIFIED	CONTACT RESISTANCE	20m ohms (max.)	
IDC PUNCH DOWN CYCLE	Over 250 Cycles (min.)	CURRENT RATING	1.5 Amps
JACK INSERTION CYCLE	Over 2000 Cycles (min.)	DC RESISTANCE	0.1 ohms (max.)
OPERATION TEMPERATURE	-40 — +70 Degrees Celsius	WITHSTANDING VOLTAGE	1000 VAC RMS @ 60Hz/1min
TOLERANCE	X ± 1 .X ± 0.2 .XX ± 0.15		

© PC Cable World. All rights reserved.

PC Cable World product specifications are subject to change without notice, but are accurate at the time of printing. Please contact a sales representative for current specs. Please note that all physical specifications are nominal.

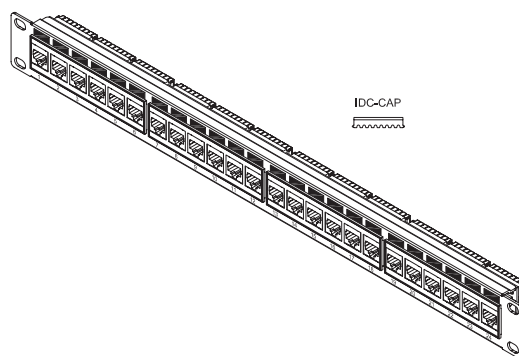
www.pccableworld.com



AVAILABLE COLOURS



SIZE (WxDxH) 482 x 30 x 44 mm



RJ45 CAT6 48-PORT LOADED PATCH PANEL (110 TYPE)

SKUS C6-4548

FEATURES

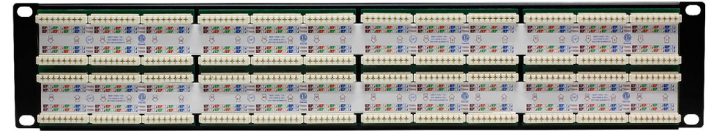
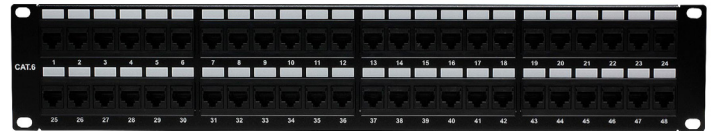
- 2U 48-Port Loaded RJ45 Category 6 Patch Panel, with T568A/B colour coded wiring patterns
- Rack-mountable, fits within any standard 19" rack or cabinet
- Use with 110 punch-down tool with keystones for terminating 22-26 AWG Cat6 cable
- Labels on the front provide space for adding identification, with an additional port numbering system on the front and rear of the patch panel
- Meets ANSI/EIA/TIA 568B AND ISO/IEC 11801 & EN50173 standards, RoHS compliant, Third Party Tested, and cETLus Intertek Listed
- Mounting hardware not included with patch panel

MATERIALS

FRONT PLATE	Fireproof ABS UL-94V0
PANEL	Metal (SPCC)
JACK	8P8C 50 Micro-inches gold plated
PCB	FR-4 / UL-94V0
IDC CAP	Fireproof ABS UL-94V0
IDC BODY	Fireproof ABS UL-94V0
IDC PIN	Bronze & Tinned
IDC DESCRIPTION	For 22-26 AWG For 110 punch-down tool

SPECIFICATIONS

UL APPROVED 3P THIRD PARTY TESTED ROHS COMPLIANT	INSULATION RESISTANCE	500M ohms (min.)	
MEETS C6 EIA/TIA 568B STANDARD CETLUS CERTIFIED	CONTACT RESISTANCE	20m ohms (max.)	
IDC PUNCH DOWN CYCLE	Over 250 Cycles (min.)	CURRENT RATING	1.5 Amps
JACK INSERTION CYCLE	Over 2000 Cycles (min.)	DC RESISTANCE	0.1 ohms (max.)
OPERATION TEMPERATURE	-40 — +70 Degrees Celsius	WITHSTANDING VOLTAGE	1000 VAC RMS @ 60Hz/1min
TOLERANCE	X ± 1 .X ± 0.2 .XX ± 0.15		



AVAILABLE COLOURS



SIZE (WxDxH) 482 x 30 x 88 mm

