

RJ45 CAT6 SLIM KEYSTONE JACK (110 PUNCH DOWN)

SKUS	C6-71BK	(Black)	C6-71OR	(Orange)
	C6-71BL	(Blue)	C6-71RD	(Red)
	C6-71GN	(Green)	C6-71WT	(White)
	C6-71GY	(Grey)	C6-71YL	(Yellow)

FEATURES

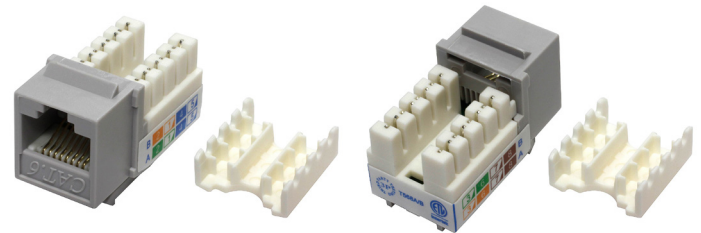
- Category 6 UTP RJ45 Slim Keystone 16.6 x 31.5 x 22.3 mm
- Use with 110 punch-down tools for speedy termination of Cat6 bulk cable
- Snap in for use with wall plates, surface-mount boxes, or unloaded patch panels
- 90° wire connection
- Backwards compatible with previous keystone jack standards
- Colour coded T568A and T568B wiring patterns on side of jack
- UL approved, 3P Third Party Tested, RoHS compliant, meets C6 EIA/TIA 568B Standard, cETLus certified

MATERIALS

BODY	Fireproof ABS UL-94V0
JACK	8P8C 50 Micro-inches gold plated
PCB	FR-4 / UL-94V0
IDC CAP	Fireproof ABS UL-94V0
IDC BODY	Fireproof ABS UL-94V0
IDC PIN	Bronze & Tinned
IDC DESCRIPTION	For 22-26 AWG For 110 punch-down Tool

SPECIFICATIONS

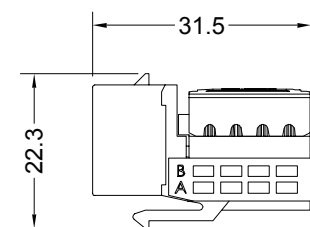
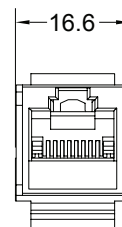
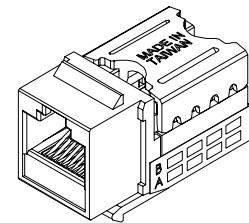
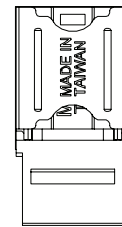
UL APPROVED 3P THIRD PARTY TESTED ROHS COMPLIANT	INSULATION RESISTANCE	500M ohms (min.)	
MEETS C6 EIA/TIA 568B STANDARD CETLUS CERTIFIED	CONTACT RESISTANCE	20m ohms (max.)	
IDC PUNCH DOWN CYCLE	Over 250 Cycles (min.)	CURRENT RATING	1.5 Amps
JACK INSERTION CYCLE	Over 2000 Cycles (min.)	DC RESISTANCE	0.1 ohms (max.)
OPERATION TEMPERATURE	-40 — +70 Degrees Celsius	WITHSTANDING VOLTAGE	1000 VAC RMS @ 60Hz/1min
TOLERANCE	X ± 1 .X ± 0.2 .XX ± 0.15		



AVAILABLE COLOURS



SIZE (WxDxH) 16.6 x 31.5 x 22.3 mm



RJ45 CAT6 SHIELDED SLIM KEYSTONE JACK (110 PUNCH DOWN)

SKUS C6-71S

FEATURES

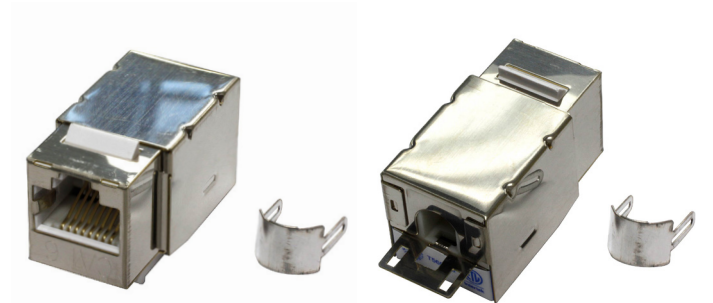
- Category 6 UTP RJ45 Shielded Slim Keystone
- 17.3 x 38.5 x 22.3 mm
- Metal termination cap for terminating Cat6 cable, with metal cable clamps to secure wire
- Use with 22-26 AWG Cat6 cable
- Snap in for use with standard sized wall plates, surface-mount boxes, or unloaded patch panels
- 90° wire connection
- Backwards compatible with previous keystone jack standards
- UL approved, 3P Third Party Tested, RoHS compliant, meets C6 EIA/TIA 568B Standard, cETLus certified

MATERIALS

BODY	Fireproof ABS UL-94V0
METALLICCASE	Metal
JACK	8P8C 50 Micro-inches gold plated
PCB	FR-4 / UL-94V0
IDC BODY	Fireproof ABS UL-94V0
IDC PIN	Bronze & Tinned
IDC DESCRIPTION	For 22-26 AWG For 110 punch-down Tool

SPECIFICATIONS

UL APPROVED 3P THIRD PARTY TESTED ROHS COMPLIANT	INSULATION RESISTANCE	500M ohms (min.)	
MEETS C6 EIA/TIA 568B STANDARD CETLUS CERTIFIED	CONTACT RESISTANCE	20m ohms (max.)	
IDC PUNCH DOWN CYCLE	Over 250 Cycles (min.)	CURRENT RATING	1.5 Amps
JACK INSERTION CYCLE	Over 2000 Cycles (min.)	DC RESISTANCE	0.1 ohms (max.)
OPERATION TEMPERATURE	-40 — +70 Degrees Celsius	WITHSTANDING VOLTAGE	1000 VAC RMS @ 60Hz/1min
TOLERANCE	X ± 1 .X ± 0.2 .XX ± 0.15		



AVAILABLE COLOURS



SIZE (WxDxH) 17.3 x 38.5 x 22.3 mm

